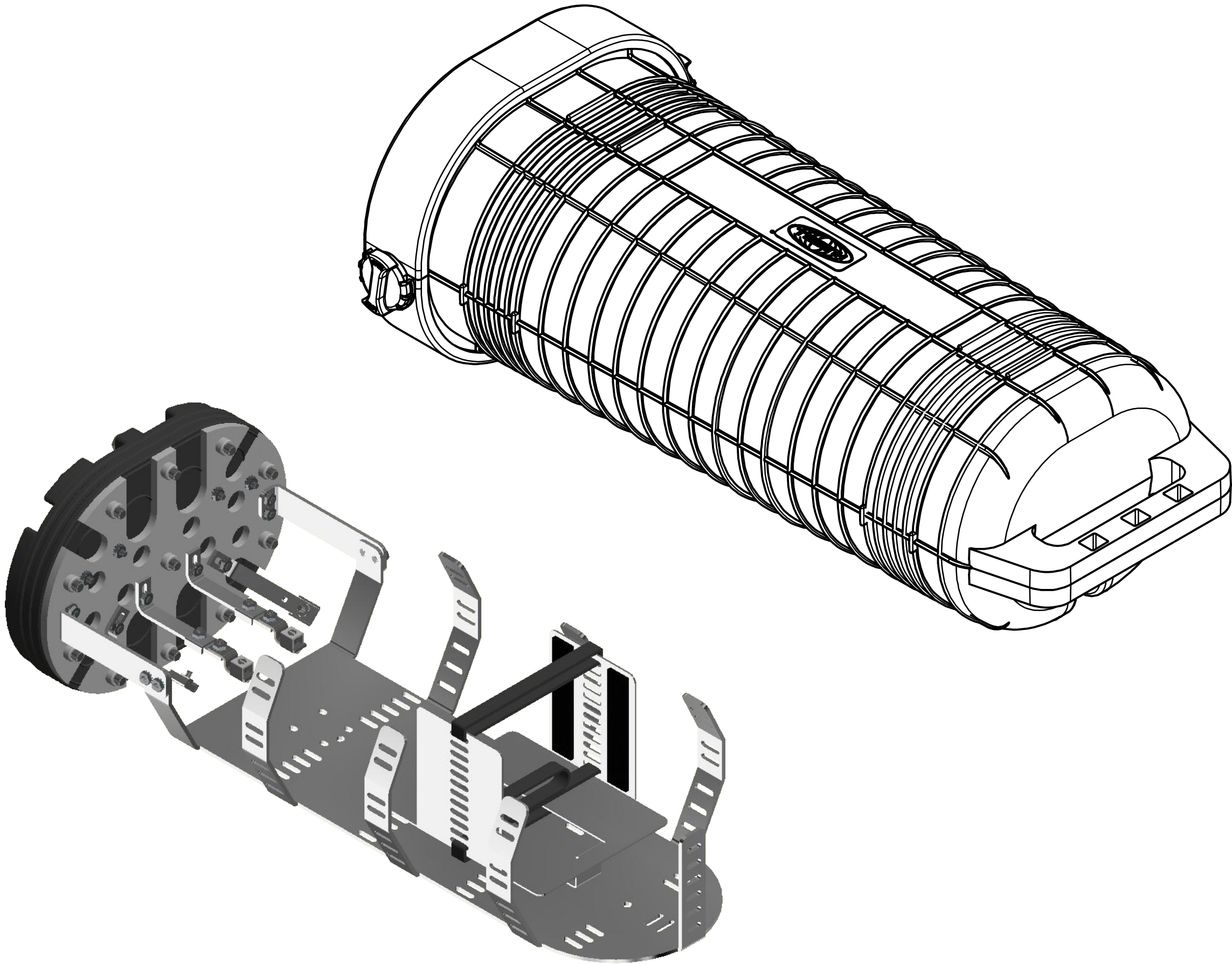
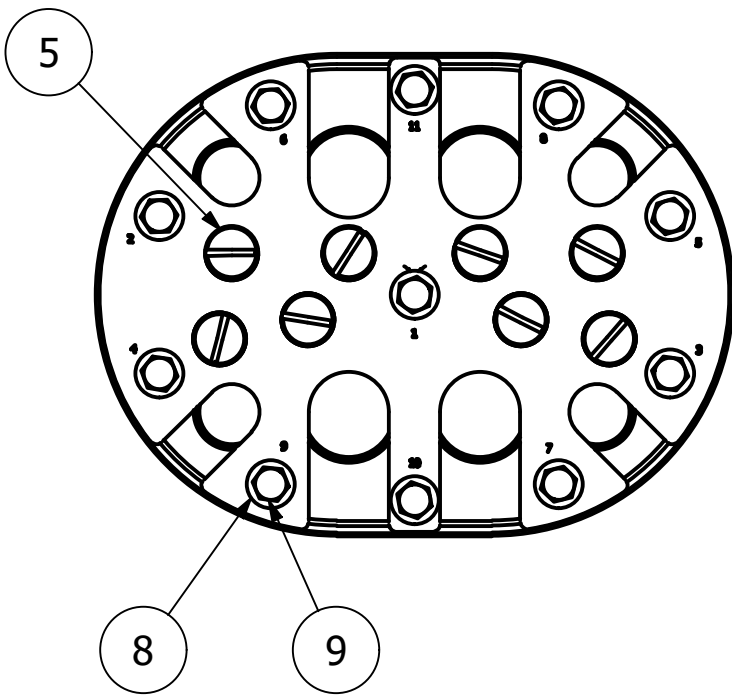
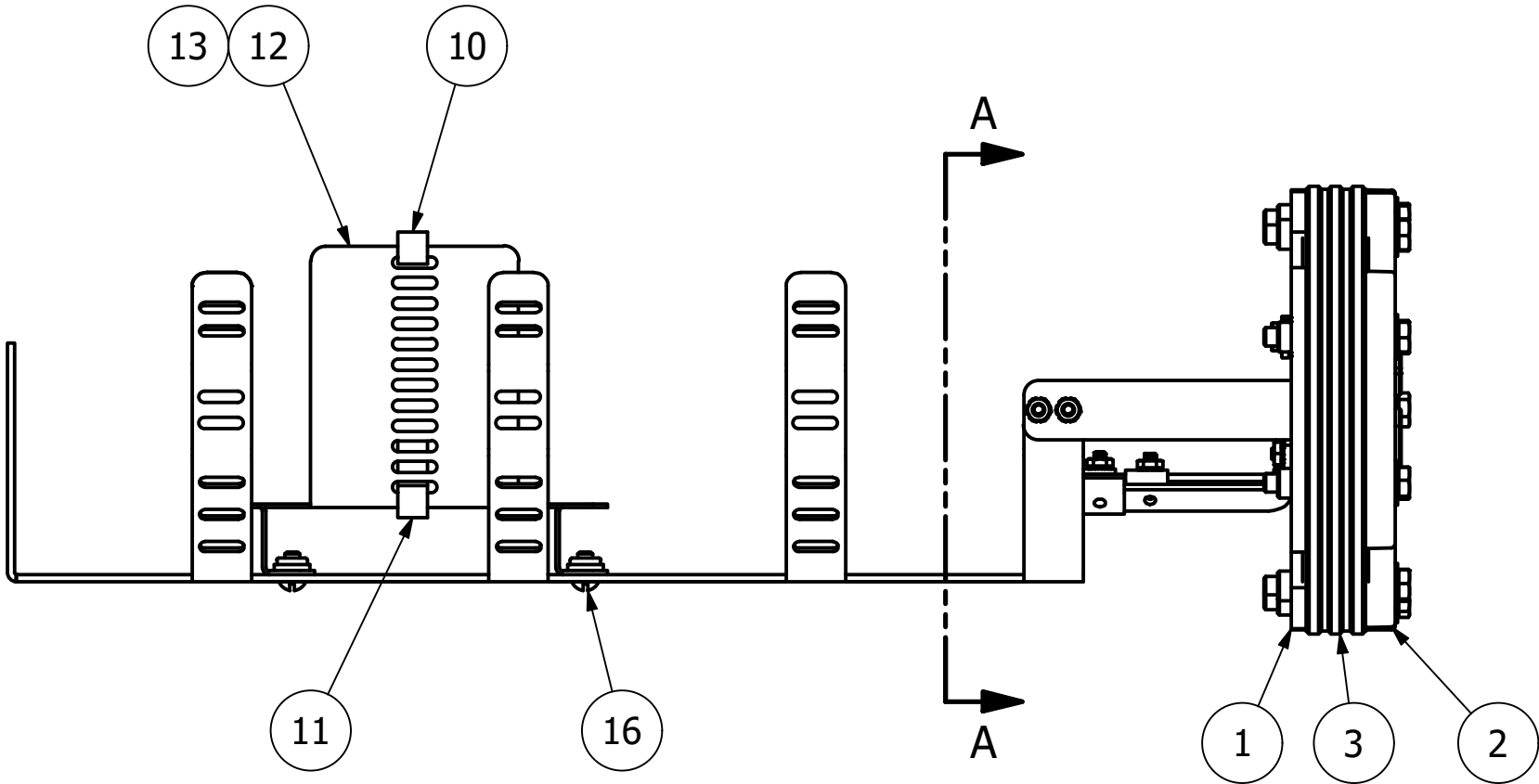
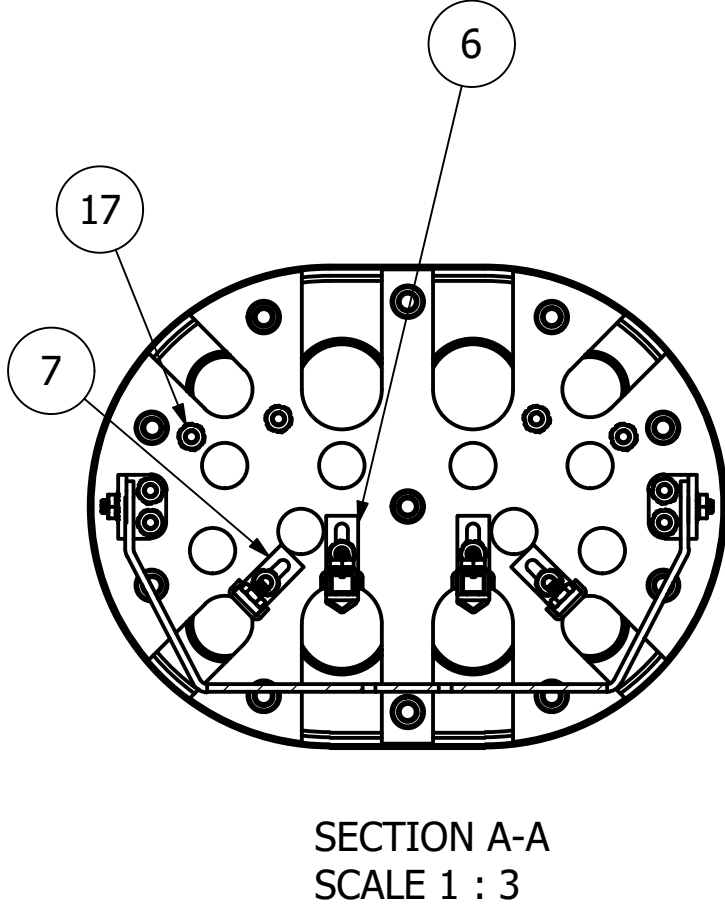
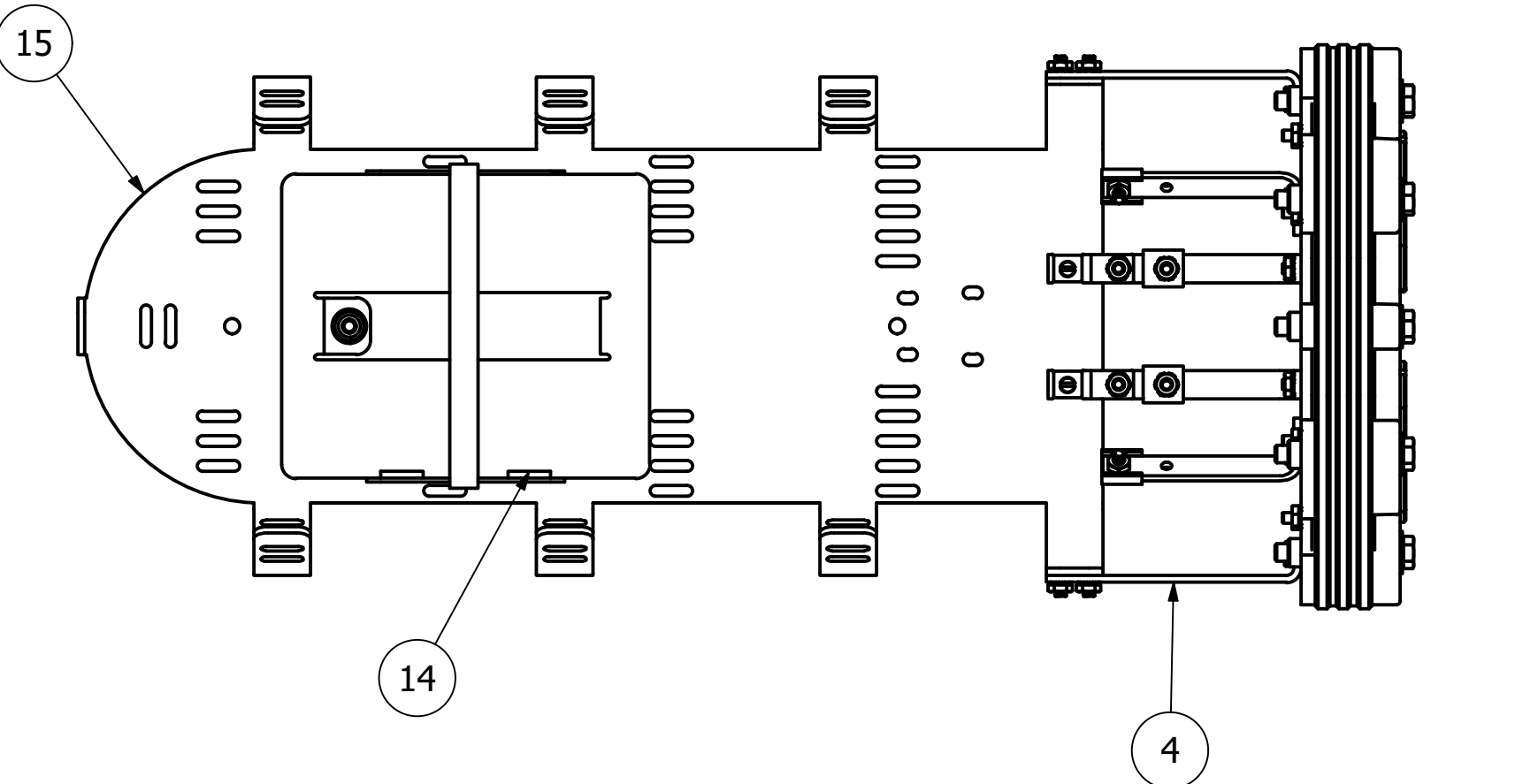
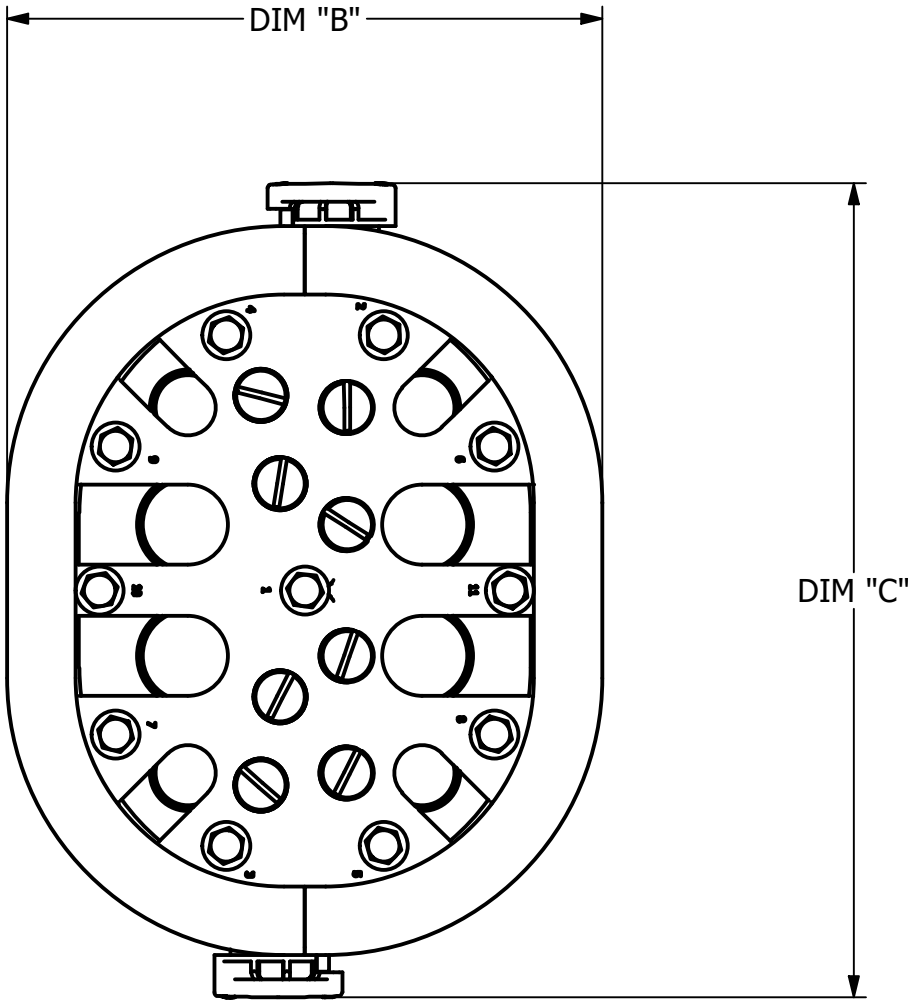
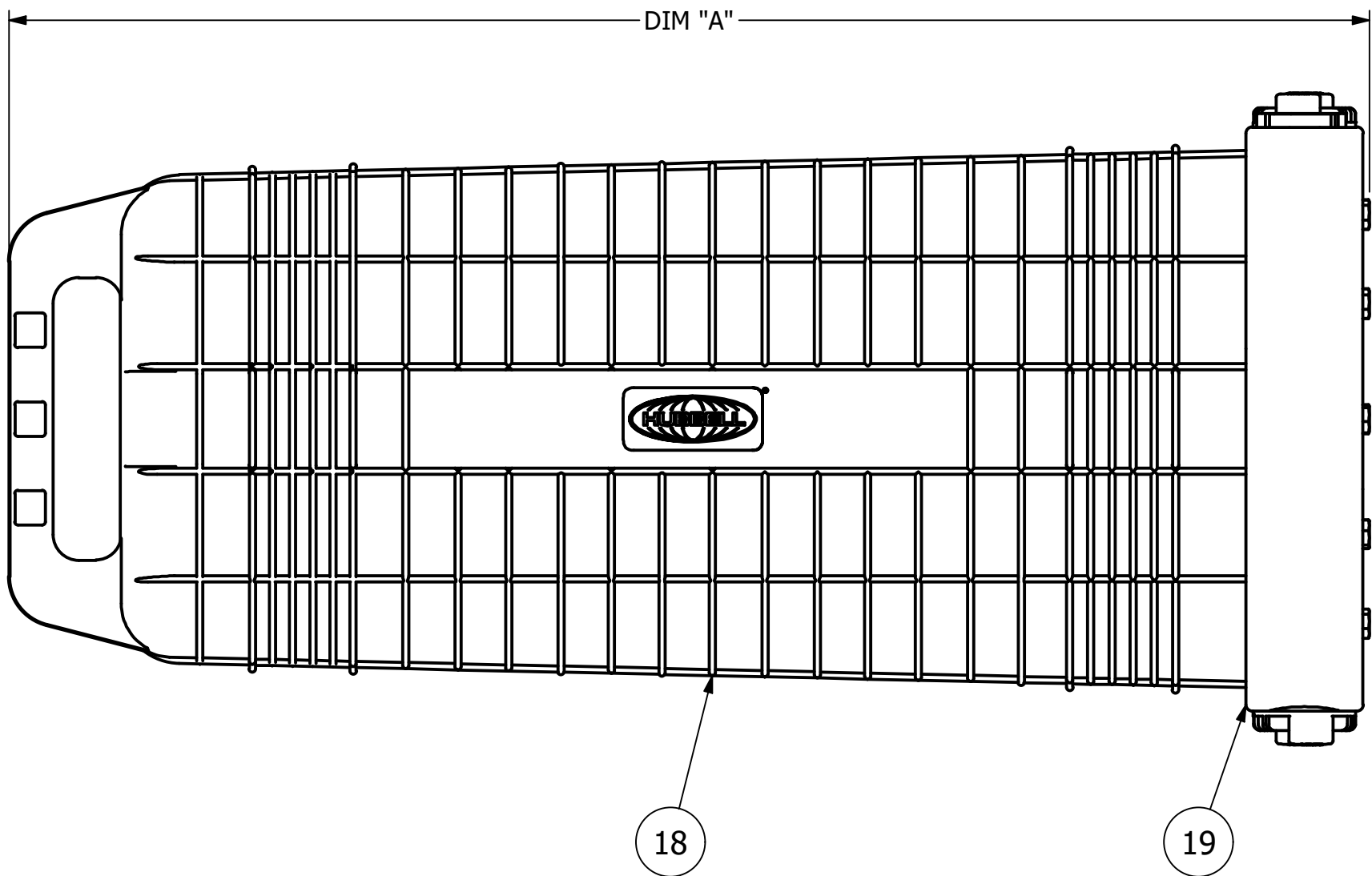


8		7			6		
CATALOG NO.	DESCRIPTION	DIM "A" IN. [MM]	DIM "B" IN. [MM]	DIM "C" IN. [MM]	WEIGHT LBS. [KG]	STANDARD PACK	GOODIE BAG
PSCA790SEB	DOME CLOSURE 790 AD STH WITH EXPRES BRKT	26.542	9.300	12.716	19.000	1	1
PSCA790WEB	DOME CLOSURE 790 AD WTH WITH WITH EXPRES BRKT	[674.17]	[236.22]	[322.98]	[8.62]		

CABLE TYPE	CABLE PORT CAPACITY (DIA.)			
	BACKBONE		LATERAL	
	MIN.	MAX.	MIN.	MAX.
ADSS	.375"	1.250"	.375"	.875"

ITEM NO.	DESCRIPTION	PSCA790SEB	PSCA790WEB
1	790 AD/IG INSIDE PLATE	1	1
2	790 AD/IG OUTSIDE PLATE	1	1
3	790 ELASTOMER	1	1
4	790 PLATFORM SIDE MOUNT	2	2
5	PLUG, 1/2-NPT THREADED	8	8
6	790 MODIFIED STANDOFF	2	2
7	790 STAND OFF	2	2
8	5/16 FLAT WASHER, 316 STAINLESS STEEL	11	11
9	SCR 5/16-18x2.25 HHCAP SS	11	11
10	12 IN VELCRO FOR WIDE TRAY HOLDER	1	1
11	24 IN WIDE TRAY HOLDER VELCRO	1	1
12	790, WIDE TRAY HOLDER	-	1
13	STANDARD STACKING TRAY HOLDER	1	-
14	4 IN NEOPRENE TAPE	2	2
15	790 PLATFORM ASSEMBLY WITH EXPRESS BRACKETS	1	1
16	SCR 1/4-20x.50 SDRHMS STL ZN	2	2
17	K-LOCK NUT, #10-24, ZINC PLATED	16	16
18	790 HOUSING ASSEMBLY	1	1
19	790 COLLAR ASSEMBLY	2	2
20	790 GOODIE BAG (NOT SHOWN)	1	1
21	INSTRUCTION SHEET (NOT SHOWN)	1	1



GOODIE BAG		
ITEM	DESCRIPTION	QTY
1	24" SPIRAL WRAP	1
2	RTV SILICONE ADHESIVE & SEALANT, ORIGINAL PACKAGE	1
3	1.25" HOSE CLAMP	4
4	790 MEASURING TAPE	1
5	ROLL OF 7 PCS OF VELCRO QWIKTIE	2
6	1/2 X 1 X 4 NEOPRENE TAPE	4

NOTES:

- ALL DIMENSIONS FOR REFERENCE ONLY. DISTANCE IN. [MM], FORCE LBS. [kN], TORQUE IN. LBS. [N.m],& WEIGHT LBS. [KG]
- RATINGS:
 - NA
- CERTIFICATIONS, SPECIFICATIONS, & STANDARDS:
 - NA
- SUFFIXES & VARIANT CONFIGURATION:
 - NA

210302005572	03/02/21	MK	AA	SD
EC #	DATE	CHANGED BY	CHECKED BY	APPROVED BY
DESCRIPTION:				WEIGHT, LBS
INITIAL RELEASE				SEE TABLE
THIRD ANGLE PROJECTION				CONFIDENTIAL: THIS DRAWING AND ITS CONTENTS ARE CONFIDENTIAL AND THE EXCLUSIVE PROPERTY OF HUBBELL POWER SYSTEMS. NO PUBLICATION, DISTRIBUTION OR COPIES MAY BE MADE WITHOUT THE WRITTEN CONSENT OF HUBBELL POWER SYSTEMS. HUBBELL POWER SYSTEMS UNPUBLISHED ALL RIGHTS RESERVED UNDER THE COPYRIGHT LAWS
ADDITIONAL COMMENTS: --				
HUBBELL POWER SYSTEMS, Inc.				
TITLE 790 AD WITH STD/WIDE TRAY HOLDER, EXPRESS BRACKET				
CATALOG NUMBER: SEE TABLE				
SIZE D	DWG NO. CC-27213	PART / ASSY NO. SEE TABLE		REV 00
SCALE: 1 : 3		DRN BY: MK	DATE: 01/28/21	SHEET 1 OF 1